

*Transformation
SMC*

Waterjet cutting

*Machining
CNC*



Areas

We direct our efforts to the design, prototyping, pre-series and machining of mixed or metallic parts.

We specialize in the molding of reinforced polyester parts (**SMC-CSMC technology**) for any industry sector: automotive, transportation, energy, electricity, telecommunications, naval, construction.

Our experience, added to our **ISO 9001** and **ISO 14001** certifications allow us to comply in the most demanding markets.

Business activity

Composites & Mecanizados Martiartu were born in 2000, backed by the more than 25 years of experience of the management in the SMC sector.

The company, initially dedicated to machining and assembling insulating plastics, through a strategic investment adds to its list of services the transformation of SMC, **CNC machining**, **PIMC painting** and **Water Jet Cutting**, in 5 axes, in all types of materials.

Offering a comprehensive, multidisciplinary and multisectoral solution.

AREA

COMPOSITES

We are specialists in the design and manufacture of parts in **Sheet Molding Compound** and **Carbon SMC**

With more than **20 years of experience** and thousands of parts manufactured for various sectors: transportation, automotive, construction, food, electrical, telecommunications, naval, etc.

We have several **presses** up to **1250 TN** and **3500x1800** plate.

Complemented with our **machining center**, **robotized PIMC painting** and **water jet cutting**.



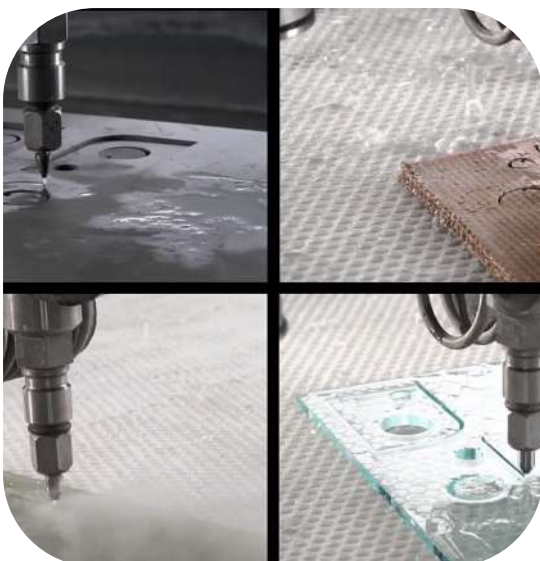


AREA

WATER JET CUTTING

5-axis waterjet cutting with up to **64°** **incline** can cut almost any material up to **200mm thick**

With our technology and experience we can guarantee that, when cutting and / or machining, no deformations or alterations of the material will be caused, achieving a perfect finish.





AREA

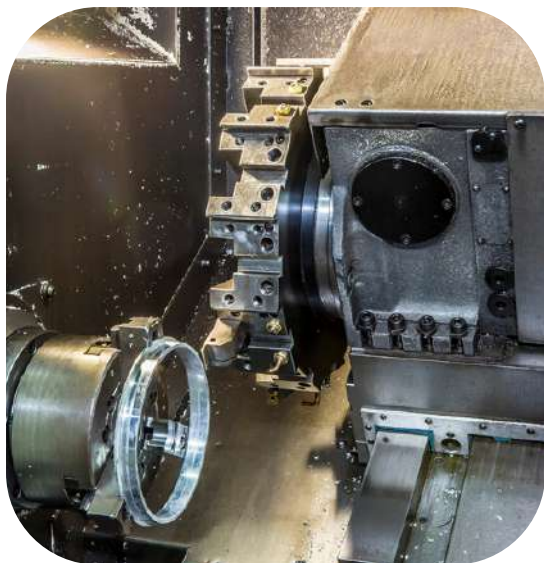
CNC MACHINING

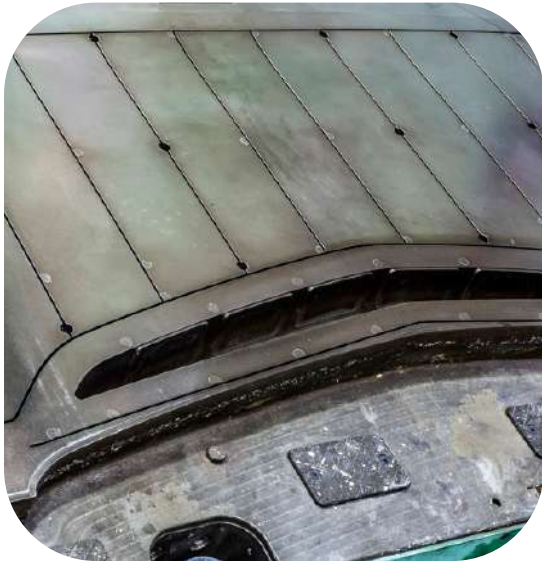
Precision machining in all types of materials and sectors.

Specializing in the machining of SMC / CSMC, bakelite, metals, mixed, polyamide, polycarbonate and PVC

With more than 5500 m², we have milling machines, punching machines, drills, presses, CNC centers, machining robots, among other means.

Complemented and integrated into our **Solidworks** and **Camworks** CAD-CAM system





AREA

PIMC PAINTED

PIMC Painted (powder in mould coating) **robotic**.

The automated application of powder paint during the molding process on SMC parts ensures an excellent finish and greater scratch resistance than conventional paints..



AREA

ENGINEERING & PROTOTYPES

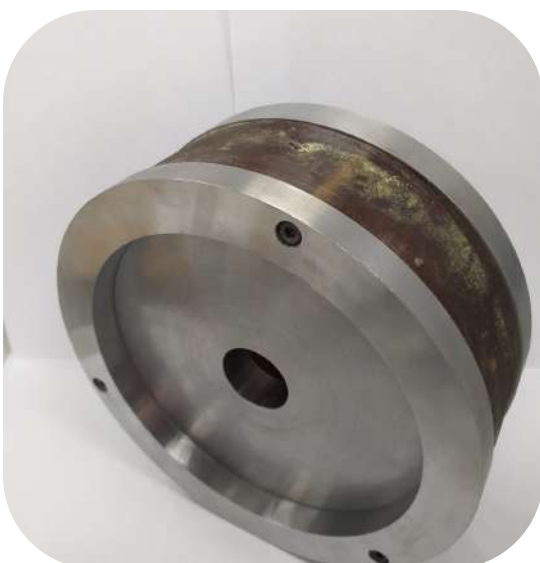
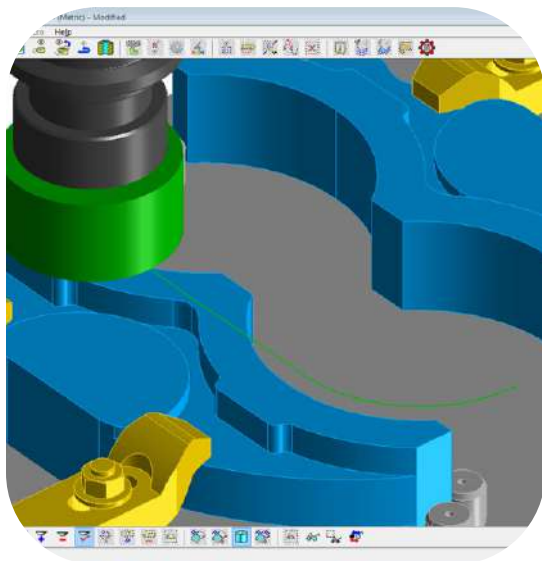
Comprehensive advice on projects that start from an **initial idea** until the **creation of the first samples.**

We provide solutions because we get involved in the **designs of products, molds and tools**, the choice of **materials, calculations, costs, processes**, etc.

Hundreds of prototypes created and more than 20 years of experience guarantee us.

We actively participate, collaborating closely with various technology centers, in **R + D + i projects.**

We specialize in **SMC-CSMC technology**, mixed materials and the development of new products, materials and processes.





WWW.COMPOSITESMARTIARTU.NET

WWW.CORTEPORCHORRODEAGUA.NET

+34 946 711 701

Pol. Ind. Martiartu
calle 2, Pab I
48480-Arrigorriaga. Bizkaia

